

# Golden Valley III

8800-8840 Seventh Ave. N  
Golden Valley, MN 55427

FOR LEASE



## Property Features

Multi-tenant office / warehouse building near the heart of Golden Valley. Quick access to I394 and Highways 55 and 169.

Building Sq. Ft. : 59,978

- 3-phase power
- Convenient to many services



Joe Smith  
952-475-5122  
jsmith@steinerdevelopment.com

Steiner Development, Inc.  
3610 County Rd. 101, Wayzata, MN 55391  
Tel: 952.473.5650 Fax: 952.473.7058

Steiner  
Development, Inc.



# Golden Valley III

8800-8840 Seventh Ave. N  
Golden Valley, MN 55427

FOR LEASE

8840 7th Ave N  
Golden Valley MN 55427

Office Sq. Ft. : 2,000

Warehouse Sq. Ft. : 1,600

Loading : DI

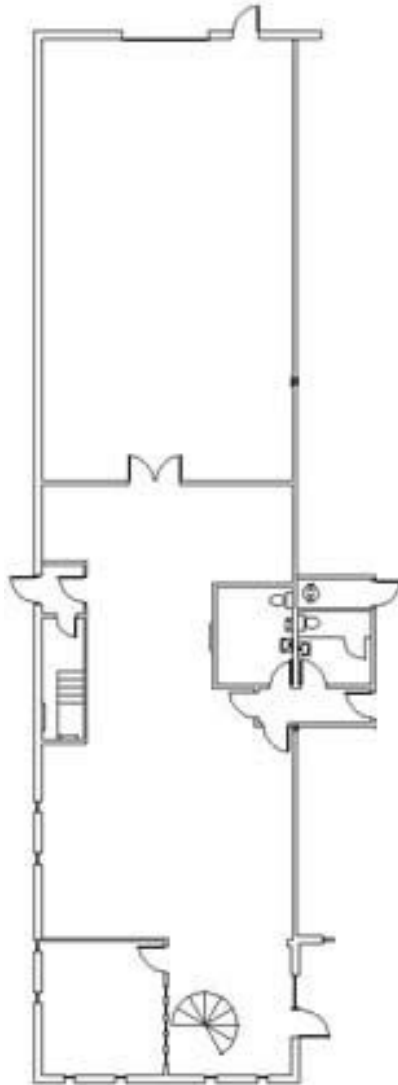
Clear Height : 18

Office Rate : \$8.25

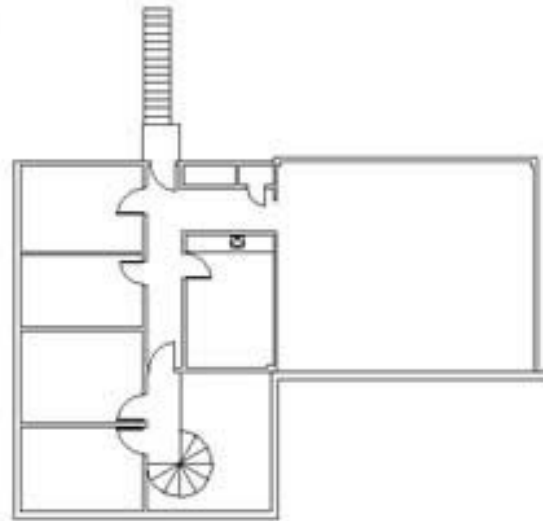
Warehouse Rate : \$4.25

Tax & Cam (est.): \$2.80

- Convenient access to Hwy 55 and 169



**Ground Level**



**Mezzanine**

The information herein was obtained from sources believed to be reliable; however, Steiner Development makes no guarantees, warranties, or representations as to the completeness or accuracy thereof. The presentation of this property is submitted subject to errors, omissions, change of price or conditions prior to sale or lease, or withdrawal without notice.

Joe Smith  
952-475-5122  
jsmith@steinerdevelopment.com

Steiner Development, Inc.  
3610 County Rd. 101, Wayzata, MN 55391  
Tel: 952.473.5650 Fax: 952.473.7058

Steiner  
Development, Inc.

