

Maplewood II A

1600-1616 Gervais Ave. E
Maplewood, MN 55109

FOR LEASE



Property Features

Multi-tenant office / warehouse building with brick exterior. Quick access to 694, 35E, and Highway 36.

Building Sq. Ft. : 56,574

- 3 phase power
- Convenient Access to White Bear Avenue and Hwy 36
- Multiple configurations available



Joe Smith
952-475-5122
jsmith@steinerdevelopment.com

Steiner Development, Inc.
3610 County Rd. 101, Wayzata, MN 55391
Tel: 952.473.5650 Fax: 952.473.7058

Steiner
Development, Inc.

Maplewood II A

1600-1616 Gervais Ave. E
Maplewood, MN 55109

FOR LEASE

1600 Gervais Avenue,
Suite 1-3
Maplewood MN 55109

Office Sq. Ft. : 3,680

Warehouse Sq. Ft. : 4,155

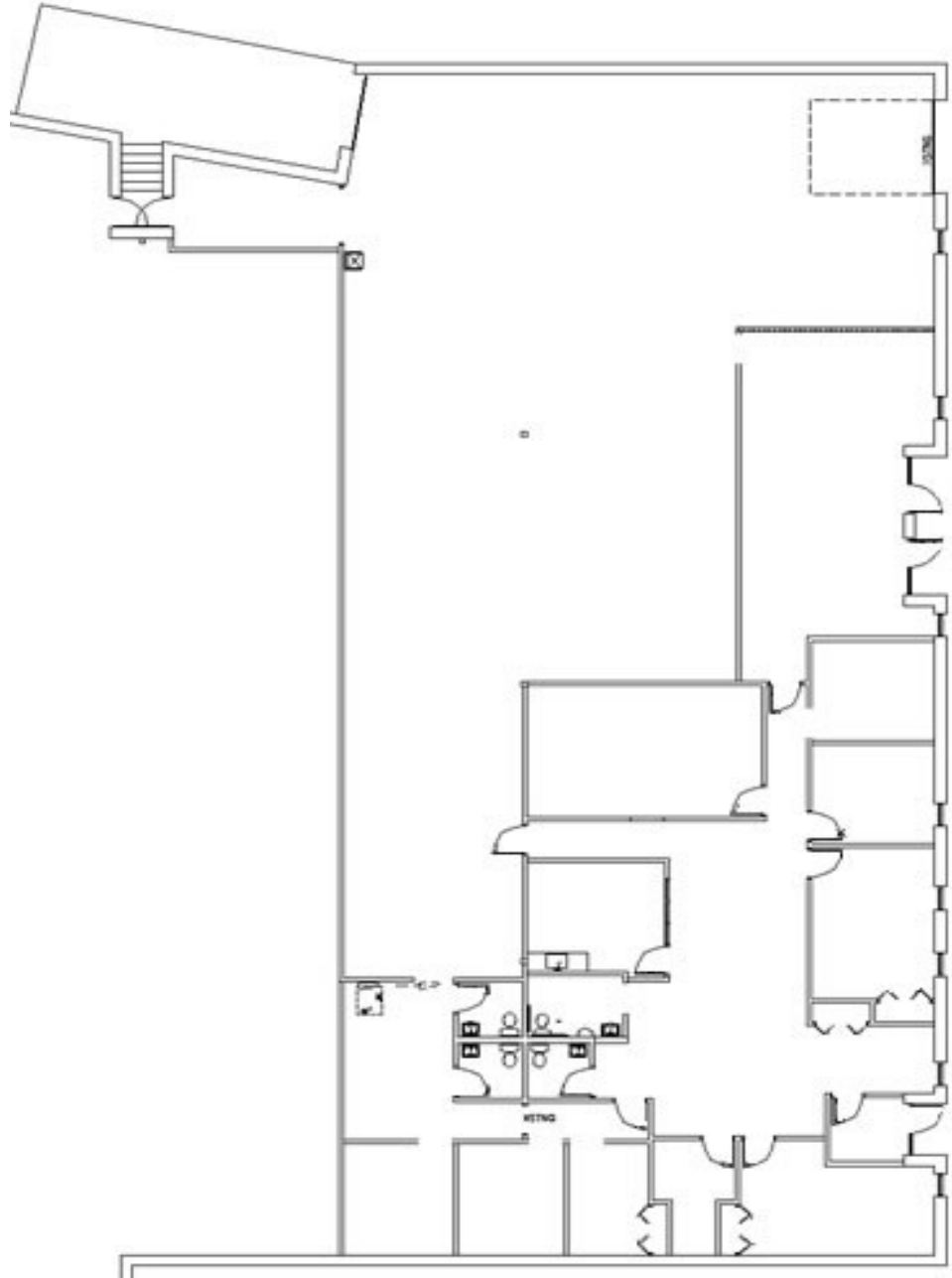
Loading : DH, DI

Clear Height : 14

Office Rate : \$7.50

Warehouse Rate : \$3.50

Tax & Cam (est.): \$2.60



The information herein was obtained from sources believed to be reliable; however, Steiner Development makes no guarantees, warranties, or representations as to the completeness or accuracy thereof. The presentation of this property is submitted subject to errors, omissions, change of price or conditions prior to sale or lease, or withdrawal without notice.

Joe Smith
952-475-5122
jsmith@steinerdevelopment.com

Steiner Development, Inc.
3610 County Rd. 101, Wayzata, MN 55391
Tel: 952.473.5650 Fax: 952.473.7058

Steiner
Development, Inc.

